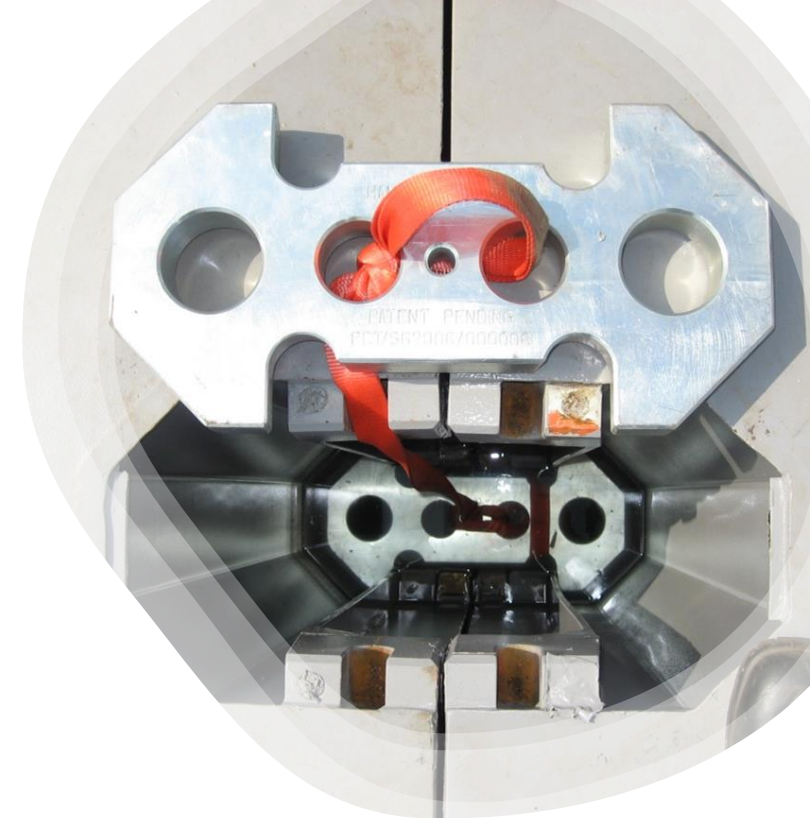


Plenary: Floating Sustainable Blue Economy Cities

Time: 4:00 PM – 5:30 PM
Date: 17 October 2022

Panellist: Henry Lei Han
MD, Hann-Ocean Technology



Rigifloat® Modular Pontoons & Connectors

- Enabling Construction of
Very Large Floating Structures (VLFS)

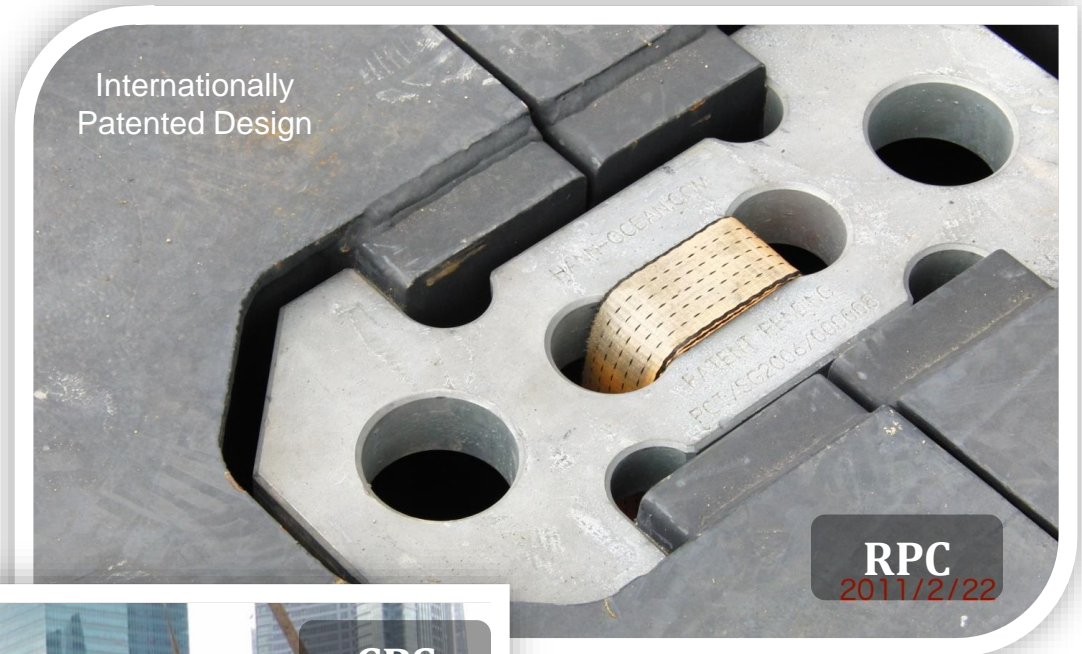
RigiFloat® Technology

What are RigiFloat products?

→ Rigid Pontoon Connector (RPC)

→ Containerized Pontoon System (CPS)

→ Concrete-Steel Composite Pontoon System (CSC)



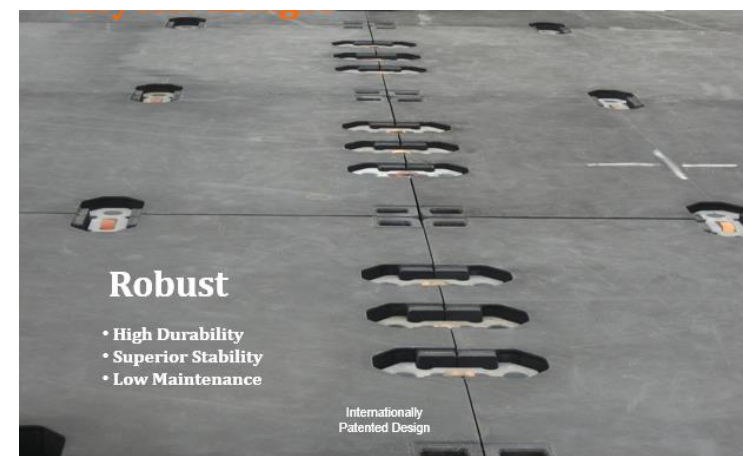
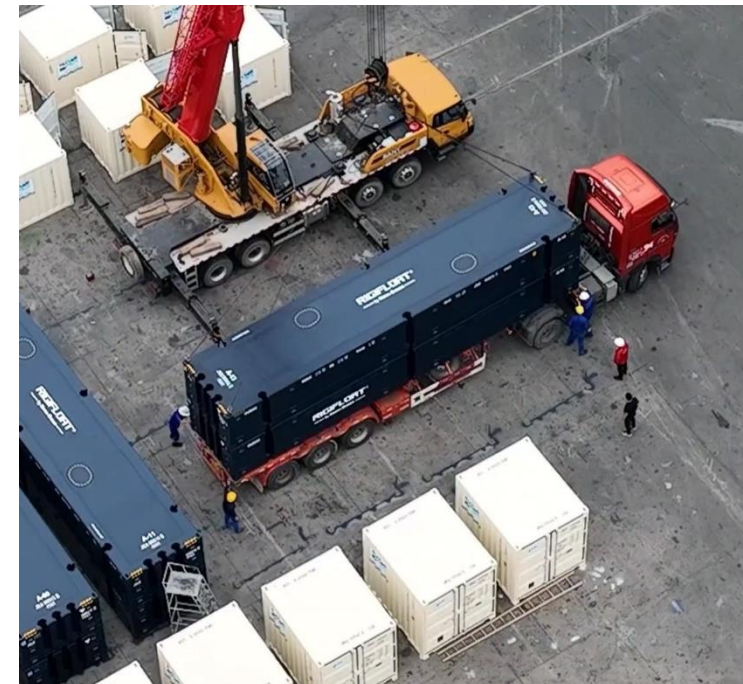
Invented by



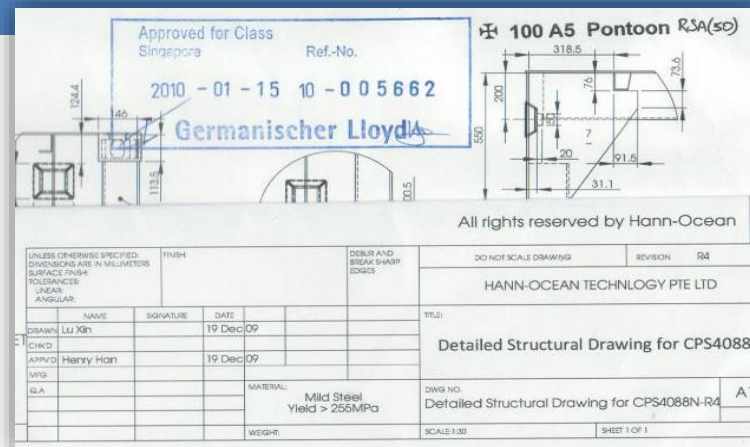
RigiFloat®

Key Benefits

- Drop-n-Lock
- Easy to assemble
- Quick to disassemble
- Rigid & stable
- Robust & lasting
- Superior strength
- Low shipping costs
- No maintenance required



Ship Class Approval & Certification



RigiFloat® Possible Applications

- Floating personal water suite
- Detachable crane barge
- Piling barge
- Floating bridge
- Floating jetty
- Floating city
- Floating island
- Floating house
- Floating apartments in lakes



RigiFloat® Possible Applications

- Floating entertainment hub
- Floating port
- Floating airport
- Floating helideck
- Floating marina jetty
- Floating offshore accommodation
- Floating breakwater
- Floating wave generator
- As many as you can imagine



Latest Successful RigiFloat Project

Using Hann-Ocean's RigiFloat technology, 42 units of floating modules were successfully joined with 198 pairs of rigid connectors, plus 6 pairs of hinge connectors, to form a 1082 sqm floating platform in Australia on 22 September 2022.



**With RigiFloat[®], Sustainable Floating
Cities will become a reality.
Let's do it together!**

Contact: enquiry@hann-ocean.com
Visit: www.hann-ocean.com

SOS 2022



RigiFloat® Project Track Record

- Supply of **4 modular pontoons (CPS2084)** and **20 connectors (RPC-S88)** to Offshore Construction Services Pte Ltd in Dec 2007 to assemble a floating jetty for the yard
- Supply of **4 modular concrete-steel composite pontoons** (9mx3mx1.5m) and 3 connectors (RPC-S88) to Singatec Shipyard (Indonesia) in Oct 2009 to assemble a floating jetty for the shipyard
- Supply of **3 sets of Personalized Water Suites (PWS)** to be assembled by 4 pontoons (CPS4084) with 96 connectors in total delivered to Nautique Pte Ltd in Feb 2009
- Supply of **19 CPS pontoons (CPS4088N)** and **72 RPC-S88 connectors** to form a Detachable Crane Barge (180T) for HSL Constructors Pte Ltd on 15 October 2009
- Supply of **3 modular pontoons (12m x 5m x.2.5m)** and 2 connectors (RPC-S88) to Jurong Shipyard (Indonesia) to assemble a floating wave energy array at its jetty in July 2013
- Supply of **24 connectors (RPS-S88)** to ASL Marine Holding Ltd to be used to assemble a crane barge in June 2016
- Supply of **19 CPS pontoons (CPS4088N)** and **72 RPC-S88 connectors** to Clement Marine Pty Ltd (Australia), refurbished after its 10 year-usage
- Supply of **24 modular pontoons Type-A (CPS4084.5R-A)** to Polaris Marine Pty Ltd (Australia) on 26 June 2022
- Supply of **208 connectors (RPC-S88)** to Polaris Marine Pty Ltd (Australia) on 26 June 2022
- Supply of **12 modular pontoons Type-B (CPS4084.5R-B)** to Polaris Marine Pty Ltd (Australia) on 3 July 2022
- Supply of **6 hinge connectors** to Polaris Marine Pty Ltd on 3 July 2022