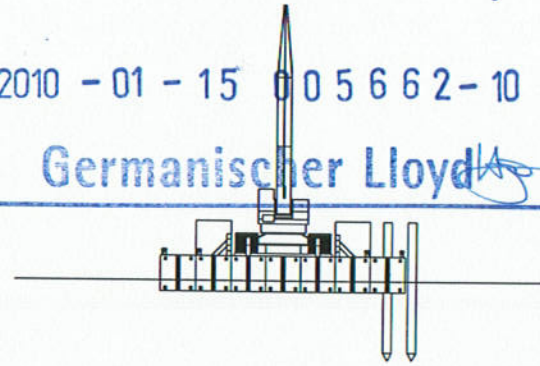
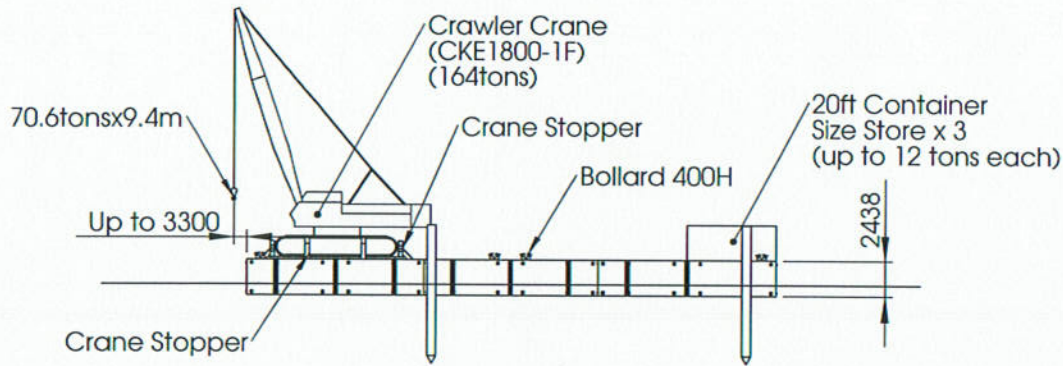


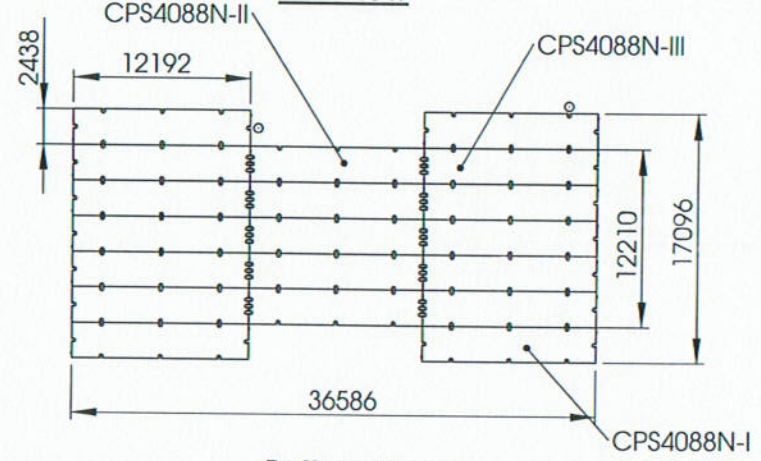
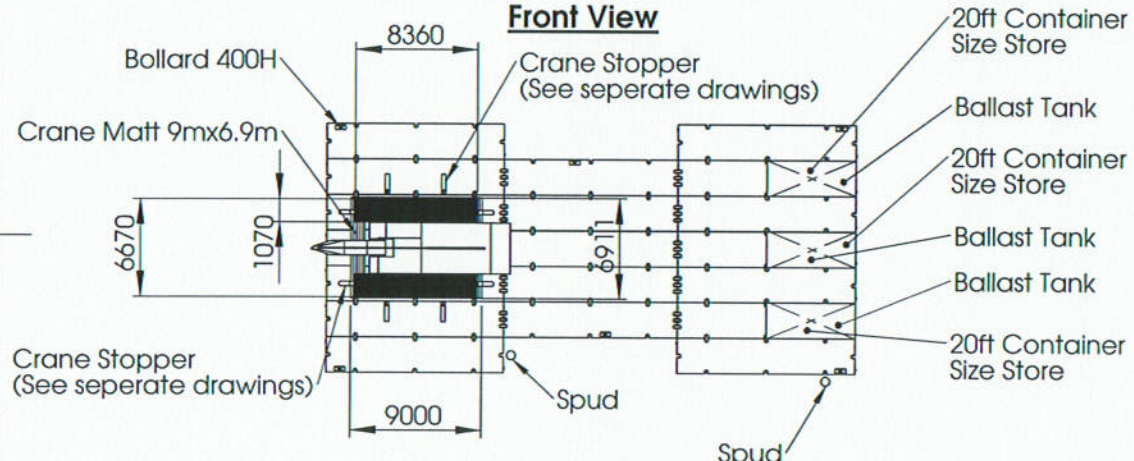
1 2 3 4 5 6

for INFORMATION only  
 2010 - 01 - 15 005662-10  
 Germanischer Lloyd



**Front View**

**Left View**



**Top View**

**Bottom View**

**SYSTEM CONFIGURATION**

4xCPS4088N-I+5xCPS4088N-II+10xCPS4088N-III  
 2xSpuds, 24"RDx6m(TBC)  
 2xSpud Holders, 24"RD  
 78x RPC-S88

**MAIN PARAMETERS**

Overall Length: 36.6m  
 Overall Beam: 17.1m  
 Overall Height: 2.438m  
 Lightship Displacement: 236.9tons (incl. 78 connectors)

UNLESS OTHERWISE SPECIFIED:  
 DIMENSIONS ARE IN MILLIMETERS  
 SURFACE FINISH:  
 TOLERANCES:  
 LINEAR:  
 ANGULAR:

FINISH:

DEBUR AND  
 BREAK SHARP  
 EDGES

All rights reserved by Hann-Ocean Technology

DO NOT SCALE DRAWING

REVISION R7

HANN-OCEAN TECHNOLOGY PTE LTD

TITLE:

**HSL 180T Detachable Crane Barge  
 -General Layout-H Shape**

DWG NO.

HSL 180T Detachable Crane Barge-General Plan Layout-H Shape-R7

A4

	NAME	SIGNATURE	DATE
DRAWN	Lu Xin		28 Dec 2009
CHKD			
APPV'D	Henry Han		28 Dec 2009
MFG			
Q.A			
			MATERIAL:
			WEIGHT:

SCALE:1:1000

SHEET 1 OF 1

1 2